

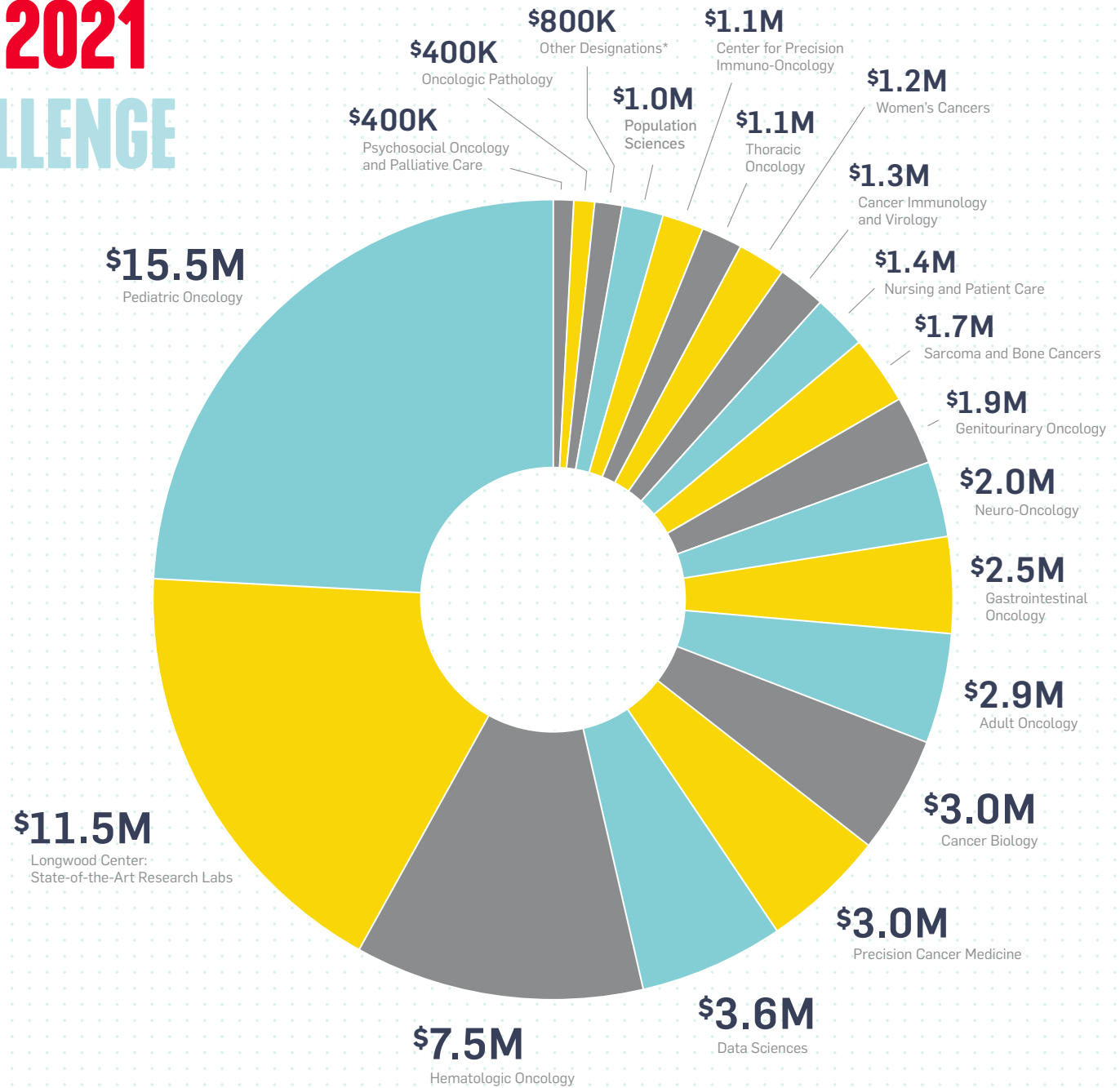
\$64 MILLION IN 2021

PAN-MASS CHALLENGE

IMPACT

The Pan-Mass Challenge raises funds for Dana-Farber Cancer Institute and the Jimmy Fund's lifesaving mission to conquer cancer. In 2021, committed riders, donors, sponsors, and volunteers joined together to contribute \$64 million. This chart shows how Dana-Farber allocates these funds to bring us closer by the mile.

This chart depicts rider-designated funds in addition to unrestricted funds raised, and reflects how unrestricted funds are directed in accordance with Institute budget priorities.



* including Cutaneous Oncology, Head and Neck Oncology, Joint Ventures, Radiation Oncology and the Zakim Center