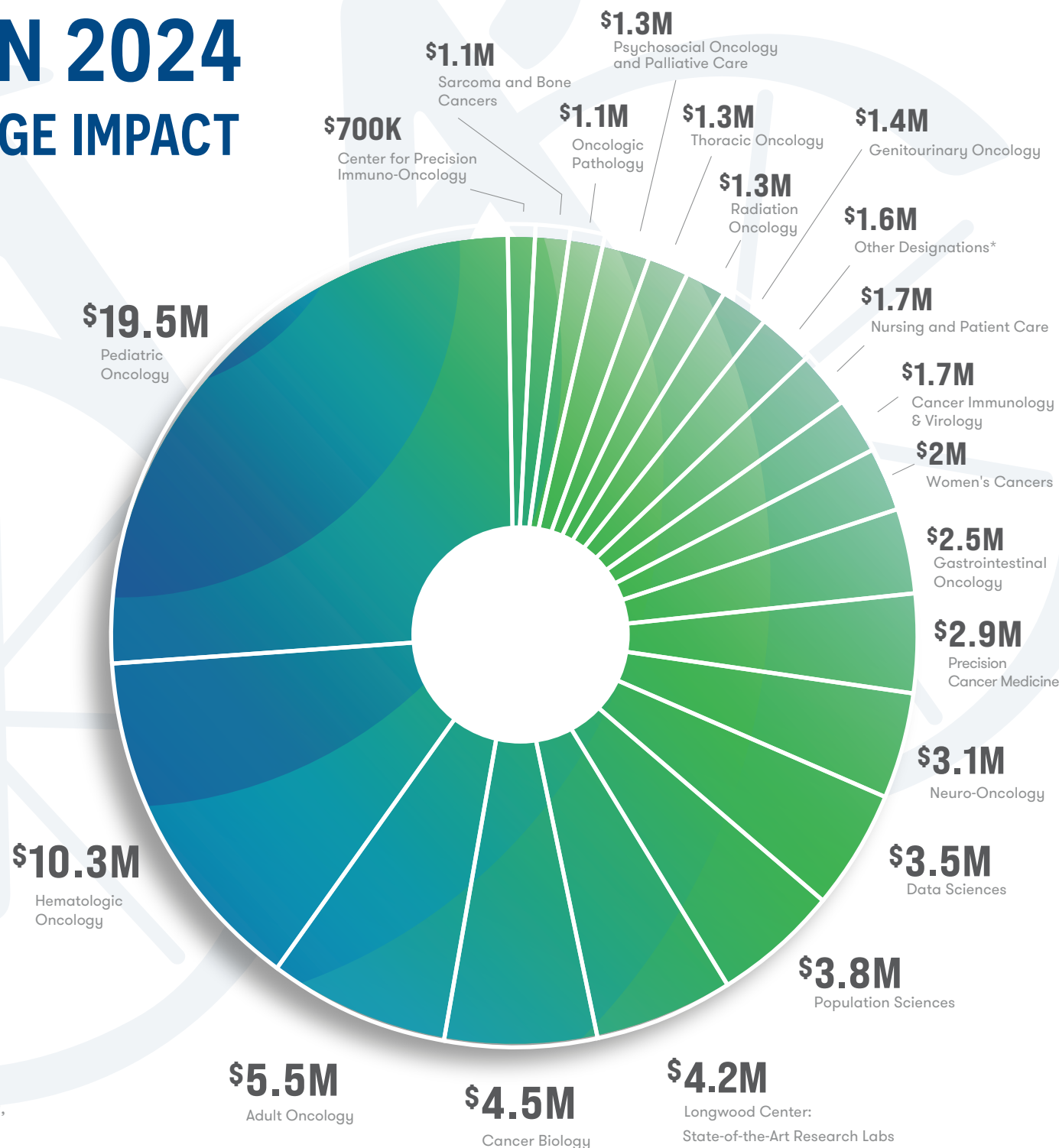


\$75 MILLION IN 2024 PAN-MASS CHALLENGE IMPACT

The Pan-Mass Challenge raises funds for Dana-Farber Cancer Institute and the Jimmy Fund's lifesaving mission to conquer cancer. In 2024, committed riders, donors, sponsors, and volunteers joined together to contribute \$75 million, which is 66% of the Jimmy Fund annual revenue.

This chart depicts rider-designated and unrestricted funds raised, and shows how Dana-Farber allocates them to bring us closer by the mile.



*including Cutaneous Oncology, Head and Neck Oncology, Joint Ventures, Imaging, and the Zakim Center